

**AERODROME/
HELIPORT
CHART - ICAO**

26°14'31.12"S
028°09'04.88"E

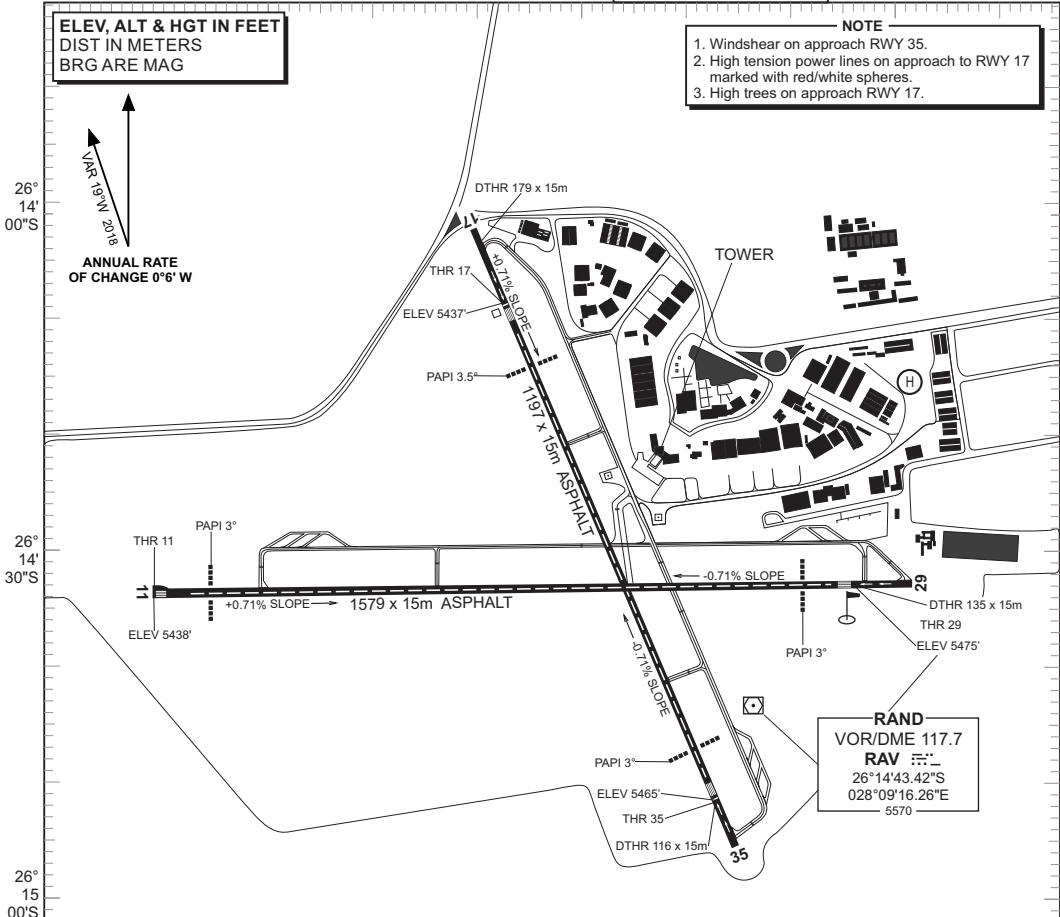
ELEV 5483'
GUND 87.6'

RADAR APP 134.40 (N)
123.70 (W)
124.50 (S & E)
TWR 118.70

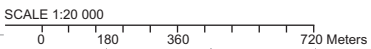
**RAND
(JOHANNESBURG)**
FAGM

**ELEV, ALT & HGT IN FEET
DIST IN METERS
BRG ARE MAG**

- NOTE**
1. Windshear on approach RWY 35.
 2. High tension power lines on approach to RWY 17 marked with red/white spheres.
 3. High trees on approach RWY 17.



RAND
VOR/DME 117.7
RAV $\overline{---}$
26°14'43.42"S
028°09'16.26"E
5570



RWY LIGHTING					
RWY	ALS	PAPI	RTHL	REDL	RENL
11	NIL	3°	GREEN	WHITE	RED
29	NIL	3°	GREEN	WHITE	RED
17	NIL	3.5°	GREEN	WHITE	RED
35	NIL	3°	GREEN	WHITE	RED

OTHER: OBST, TWY & AD BEACON

028°08'30"E 028°09'E 028°09'30"E

PHYSICAL CHARACTERISTICS

RWY	DIRECTION (T)	THR COORDINATES	THR ELEVATION	TORA (m)	TODA (m)	ASDA (m)	LDA (m)	SWY (m)	CWY (m)	SLOPE	SURFACE	BEARING STRENGTH	CIRCUIT
11	089°	26°14'33.55"S 028°08'25.99"E	5438'	1579	1579	1714	1714	135	0	0.007 U	ASPH	LCN 51	R/H
29	269°	26°14'32.87"S 028°09'22.86"E	5475'	1714	1714	1714	1579	0	0	0.007 D	ASPH	LCN 51	L/H
17	157°	26°14'12.66"S 028°08'54.55"E	5437'	1376	1376	1492	1313	116	0	0.007 U	ASPH	LCN 43	R/H
35	337°	26°14'48.44"S 028°09'11.51"E	5465'	1313	1313	1492	1376	179	0	0.007 D	ASPH	LCN 43	L/H

CHANGE: True/Magnetic Arrows and GUND